

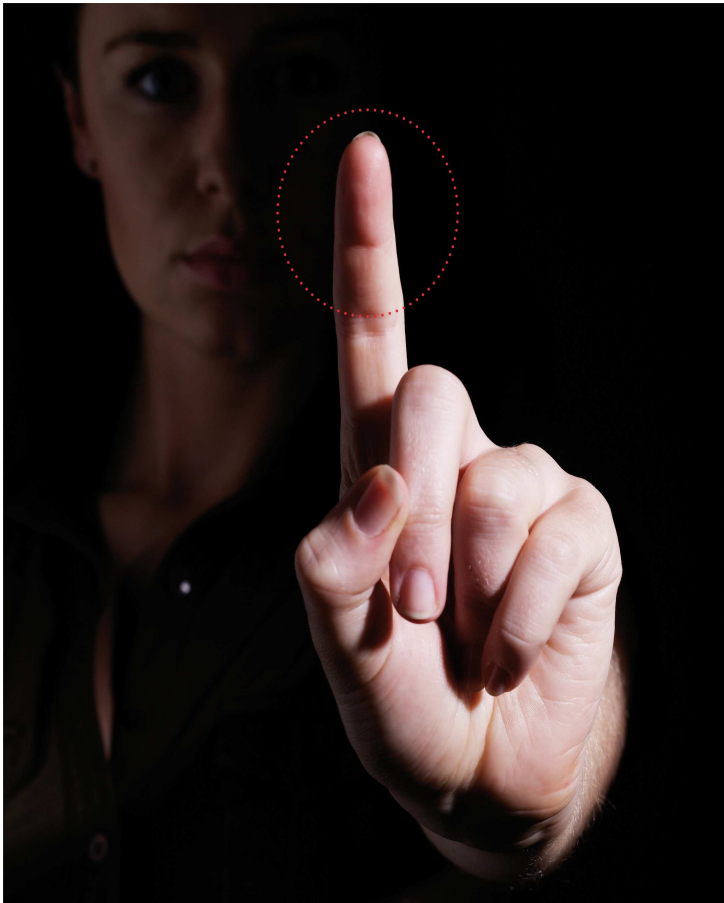
Hitachi Finger Vein - Embedded Reader



www.hitachi-eu.com/veinid

Hitachi Europe Limited, Whitebrook Park, Lower Cookham Road, Maidenhead, Berkshire, UK SL6 8YA

T: +44 1628 585581 F: +44 1628 585440 E: veinid@hitachi-eu.com



Advantages

Resistant to Tampering: Veins are hidden inside the body, there is little risk of forgery or theft.

High accuracy: Unique and constant: Finger vein patterns are different even among identical twins and remain constant through the adult years.

Contactless: The use of near-infrared light allows for non-invasive, contactless imaging that ensures both convenience and cleanliness for the user experience.

Ease of use: Finger vein patterns are relatively stable and clearly captured, enabling the use of low-resolution cameras to take vein images for small-size, simple data image processing.

Authentication Speed: One-to-one authentication takes less than one second. Moreover, the authentication device can be compact due to the small size of fingers.

Technical Specification

Finger Vein Biometric Scanner

Hitachi-Omron TS-E3F1-50ZRZ Compact Scanner	
Interface:	RS 232
Dimensions [W x D x H]	69 x 85 x 43
Template Storage	Internal Flash or
External	[server or card]
Template Size	Approx 500 bytes
Authentication Method	1:1, 1:N [N up to 1000]
False Reject Rate	0.01% [JIS based testing]
False Accept Rate	0.0001% [JIS based testing]
Failure to Enrol Rate	0.08% [IBG Test 2006]
Weight	Approx 0.1 Kg
Operating Temperature	5-45 °C
Power	DC 12V
Operating Environment	Avoid direct sunlight

